

Phosphate Incorporation during Glycogen Synthesis and Lafora Disease

Vincent S. Tagliabracci,^{1,3} Christian Heiss,² Chandra Karthik,¹ Christopher J. Contreras,¹ John Glushka,² Mayumi Ishihara,² Parastoo Azadi,² Thomas D. Hurley,¹ Anna A. DePaoli-Roach,¹ and Peter J. Roach^{1,*}

¹Department of Biochemistry and Molecular Biology, Indiana University School of Medicine, Indianapolis, IN 46202, USA

²Complex Carbohydrate Research Center, University of Georgia, Athens, GA 30602, USA

³Present address: Department of Pharmacology, School of Medicine, University of California, San Diego, La Jolla, CA 92093, USA

*Correspondence: proach@iupui.edu

DOI 10.1016/j.cmet.2011.01.017

SUMMARY

Glycogen is a branched polymer of glucose that serves as an energy store. Phosphate, a trace constituent of glycogen, has profound effects on glycogen structure, and phosphate hyperaccumulation is linked to Lafora disease, a fatal progressive myoclonus epilepsy that can be caused by mutations of laforin, a glycogen phosphatase. However, little is known about the metabolism of glycogen phosphate. We demonstrate here that the biosynthetic enzyme glycogen synthase, which normally adds glucose residues to glycogen, is capable of incorporating the β -phosphate of its substrate UDP-glucose at a rate of one phosphate per approximately 10,000 glucoses, in what may be considered a catalytic error. We show that the phosphate in glycogen is present as C2 and C3 phosphomonoesters. Since hyperphosphorylation of glycogen causes Lafora disease, phosphate removal by laforin may thus be considered a repair or damage control mechanism.

INTRODUCTION

Glycogen is a branched polymer of glucose that serves as a critical energy reserve in many cells from bacteria to mammals (Roach, 2002). It consists of chains of glucose residues connected by α -1,4-glycosidic linkages with α -1,6-glycosidic linkages forming branch points. Glycogen synthase catalyzes the formation of the primary polymerizing α -1,4-glycosidic linkages by transferring a glucosyl moiety from UDP-glucose to a nonreducing end of a glycogen molecule with the release of UDP (Roach, 2002). Our recent research has focused on the importance of covalently linked phosphate, a minor constituent of glycogen, of uncertain origin and function (Fontana, 1980; Lomako et al., 1993, 1994). Muscle glycogen, for example, contains one phosphate per 600–1500 glucose residues, depending on the species (Tagliabracci et al., 2007, 2008). Abnormal glycogen phosphorylation is associated with Lafora disease, an autosomal recessive progressive myoclonus epilepsy with onset in the teenage years followed by gradual worsening of neurological symptoms and death usually within

ten years (Andrade et al., 2007; Delgado-Escueta, 2007; Gentry et al., 2009). A characteristic of Lafora disease is the formation of Lafora bodies, deposits containing sparsely branched, insoluble glycogen-like polymers in many tissues, including neurons. About 50% of Lafora patients have mutations in the *EPM2A* gene that encodes laforin (Minassian et al., 1998; Serratosa et al., 1999), a phosphatase of the dual specificity family, with a carbohydrate binding module. Laforin is capable of releasing the phosphate from glycogen (Tagliabracci et al., 2007). Glycogen from Lafora patients has elevated phosphate (Sakai et al., 1970; Schnabel and Seitelberger, 1968), as does glycogen from a mouse model of Lafora disease in which the laforin gene is deleted (Tagliabracci et al., 2007, 2008). In mice, the hyperphosphorylation of glycogen is associated with progressive deterioration in glycogen structure as judged by its physicochemical properties, reduced branching frequency, and abnormal appearance by electron microscopy (Tagliabracci et al., 2008). Therefore, knowing the molecular details of phosphate metabolism in glycogen is critical to understanding Lafora body formation and Lafora disease. Prior to initiating this work, we knew only that the glycogen phosphate could be released by laforin and that excessive phosphate affected glycogen structure and solubility. Important unanswered questions were how the phosphate was introduced and where it was attached to glycogen. In this study, we identify a possible origin of the phosphate, an enzyme capable of its introduction, the chemistry of the phosphate linkage and first indications of the substrate specificity of laforin.

RESULTS

Introduction of Phosphate into Glycogen by Glycogen Synthase

Lomako et al. (1993, 1994) proposed that the phosphate in glycogen was present as a C6 monoester and as a C1–C6 bridging phosphodiester, and that a distinct, but uncharacterized, glucose-1-phosphate transferase was responsible for the formation of the phosphodiester by transfer of the β -phosphate of UDP-glucose with release of UMP (Figure 1A). To pursue the latter idea, we synthesized [β -³²P]UDP-glucose to assay and purify the proposed glucose-1-phosphate transferase. A mouse muscle extract was indeed able to transfer ³²P from [β -³²P]UDP-glucose to glycogen, consistent with the previous study (Lomako et al., 1993) (Figure 1B). A parallel incubation with UDP-[¹⁴C] glucose monitored the normal incorporation of glucose into glycogen by glycogen synthase (Figure 1B). Treatment of the

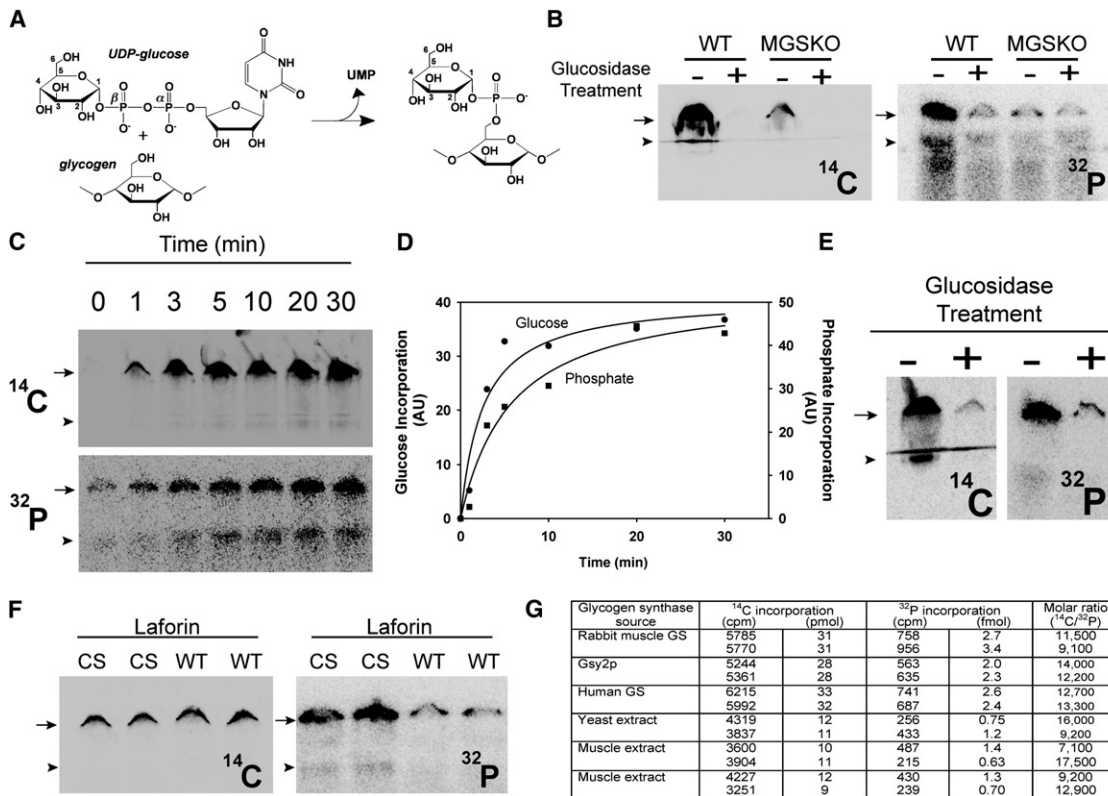


Figure 1. Glycogen Synthase Incorporates Phosphate into Glycogen from UDP-Glucose

(A) UDP-glucose structure and the glucose-1-phosphate transferase reaction proposed by Whelan (see the main text).
 (B) Incorporation of [^{14}C]glucose (left) and ^{32}P (right) into glycogen (6.67 mg/ml) catalyzed by muscle extracts from wild-type (WT) mice or mice lacking muscle glycogen synthase (MGSKO) using UDP-[^{14}C]glucose and [β - ^{32}P]UDP-glucose, respectively, as glucose donors. Reaction products were separated by SDS-PAGE, and radioactivity was detected by phosphorimaging. The arrow indicates the bottom of the well where glycogen accumulates, and the arrowhead indicates the top of the stacking gel where smaller polysaccharides migrate. Some samples were also treated with α -amylase and amyloglucosidase, as indicated, prior to SDS-PAGE. Loss of radioactivity indicates association with polysaccharide.
 (C) Time-dependent incorporation of [^{14}C]glucose (top) and ^{32}P (bottom) into glycogen (6.67 mg/ml) by purified rabbit muscle glycogen synthase (1 $\mu\text{g/ml}$).
 (D) Quantitation of the phosphorimager data in (C). Different gels were analyzed for ^{32}P and ^{14}C incorporation and the arbitrary units are not comparable.
 (E) Labeled glycogen, prepared as in (C), was purified by ethanol precipitation, subjected to treatment with α -amylase and amyloglucosidase, as indicated, and analyzed as in (B).
 (F) Glycogen, prepared as in (C), was purified by ethanol precipitation and subjected to treatment with either catalytically inactive C266S laforin (CS) or active laforin (WT).
 (G) Quantitation of ^{14}C and ^{32}P incorporation into glycogen. Glycogen was synthesized with the indicated source of glycogen synthase and duplicate measurements quantitated as described under the Experimental Procedures.
 See also Figure S1.

synthesized glycogen by a combination of the enzymes α -amylase and amyloglucosidase degrades the polysaccharide by hydrolyzing α -1,4- and α -1,6-glycosidic linkages so that it would no longer accumulate at the top of the gel. Both the ^{14}C and ^{32}P signals were reduced to background by glucosidase treatment, confirming that the radioactivity was associated with a glucose polysaccharide (Figure 1B).

In an attempt to demonstrate that the activity was distinct from glycogen synthase, we also analyzed an extract from the muscle of a genetically modified MGSKO mouse lacking muscle glycogen synthase (Pederson et al., 2004). The MGSKO extract transferred little ^{14}C into glycogen, as expected, but unexpectedly also little ^{32}P (Figure 1B and Figure S1A available online). Experiments with extracts of wild-type *Saccharomyces cerevi-*

siae and a *gsy1 gsy2* mutant strain that lacks both yeast glycogen synthase genes gave similar results, with glycogen phosphorylation comparable to that observed with mouse muscle and reduced to background in the absence of glycogen synthase (Figure S1A). We therefore concluded that the principal activity in cell extracts responsible for ^{32}P incorporation into glycogen was glycogen synthase.

To address this hypothesis, we first tested glycogen synthase purified from rabbit muscle (DePaoli-Roach et al., 2003). We found that glycogen synthase catalyzed the time-dependent introduction of phosphate from UDP-glucose into glycogen at a constant relative rate with respect to glucose incorporation (Figures 1C and 1D and Figure S1B). Again, treatment of the radioactive product with glucosidases confirmed that the

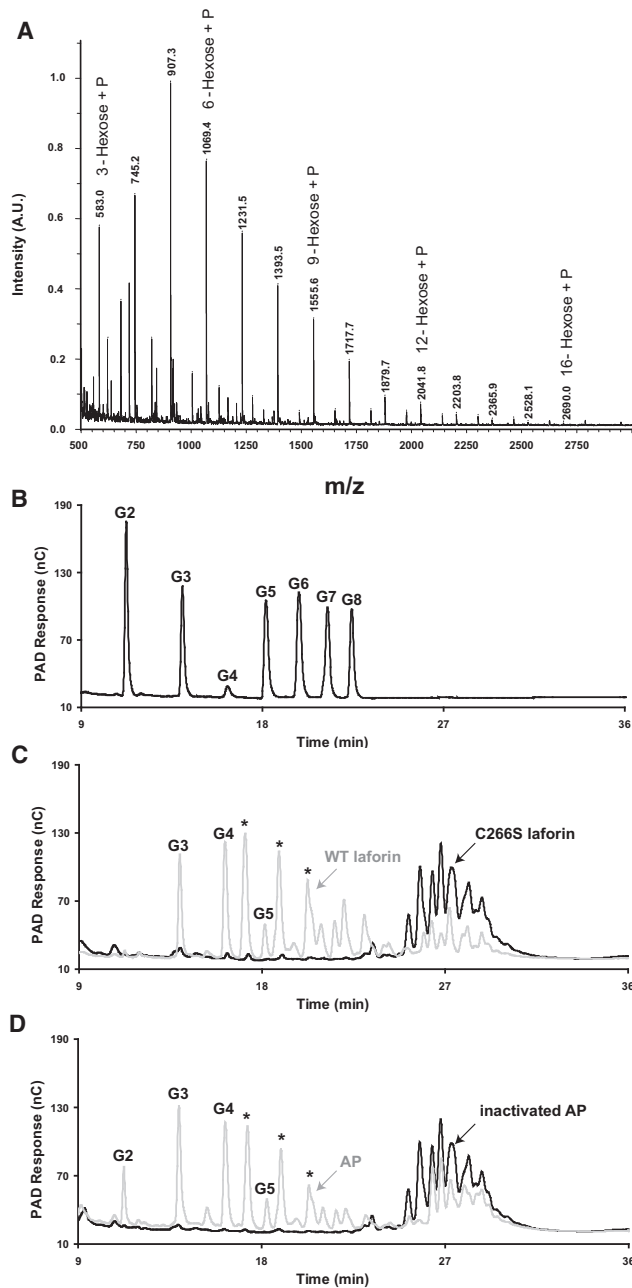


Figure 2. Purification and Analysis of Phosphorylated Oligosaccharides from Rabbit Muscle Glycogen

(A) MALDI-TOF mass spectrometry of phosphorylated oligosaccharides (fraction V; see Figure S1A) from rabbit muscle glycogen. The spectrum displays a series of species differing by 162.1 m/z indicative of a mixture of phosphorylated oligosaccharides ranging from 3 hexoses + phosphate to 16 hexoses + phosphate.

(B) HPAEC analysis of malto-oligosaccharide standards. G1, glucose; G2, maltose; G3, maltotriose; G4, maltotetraose; G5, maltopentaose; G6, maltohexaose; G7, maltoheptaose; G8, maltooctaose.

(C) Phosphorylated oligosaccharides (fraction V) were treated with either catalytically inactive laforin (C266S, black) of active laforin (WT, gray) and analyzed by HPAEC.

(D) Phosphorylated oligosaccharides were treated with either heat denatured alkaline phosphatase (inactivated AP, black) or active alkaline phosphatase

^{32}P was associated with glycogen (Figure 1E). We repeated the experiment with recombinant Gsy2p, a yeast glycogen synthase ortholog produced in *Escherichia coli*, and recombinant human muscle glycogen synthase produced by baculoviral expression. The results were very similar to what was observed with the rabbit enzyme (Figure S1B). By quantitating the incorporated radioactivity and knowing the specific radioactivities of the labeled UDP-glucoses, we determined the relative molar proportions of phosphate and glucose. From such calculations, one phosphate was introduced for approximately 10,000 glucose residues by all three purified glycogen synthases (Figure 1G). A similar phosphorylation stoichiometry was observed with extracts of yeast or mouse muscle (Figure 1G). This consistency might suggest that the frequency of phosphate introduction is linked to the properties of glycogen synthase itself.

The phosphate incorporated by glycogen synthase could be released after purification of the ^{32}P -labeled glycogen and treatment with recombinant laforin (Figure 1F). The catalytically inactive C266S mutant was ineffective. As would be expected, laforin had no effect on the ^{14}C -content of the synthesized glycogen. If laforin can remove the phosphate from the glycogen, its presence during synthesis might be expected to reduce phosphorylation. Therefore, we compared ^{32}P incorporation by extracts of muscle from wild-type mice and mice with the laforin gene disrupted (*Epm2a*^{-/-}) (Figure S1A). Phosphate incorporation into glycogen was not increased in the knockout extracts (Figure S1A). This result suggests that laforin does not act during the synthesis of glycogen in such experiments, a result consistent with the observation that relative phosphate incorporation by yeast extracts, which also lack laforin, was similar to that of muscle. In vivo, either conditions differ such that laforin can act during synthesis or, alternatively, it acts during glycogen degradation.

Glycogen Contains C2 and C3 Phosphomonoesters of Glucose

To explore the chemical nature of the glycogen phosphate, we analyzed glycogen that was purified from rabbit skeletal muscle by procedures designed to retain phosphoesters. Such glycogen was previously shown to be a substrate for laforin (Tagliabracci et al., 2007). Glycogen was digested with α -amylase and amyloglucosidase and the resulting phospho-oligosaccharides purified by anion exchange chromatography, with recovery of ~70% of the phosphate (Figure S2). MALDI TOF mass spectra were dominated by signals consistent with the presence of phospho-oligosaccharides, varying from three hexoses plus a phosphate up to 16 hexoses plus a phosphate (Figure 2A and Figure S2). By high-performance anion exchange chromatography (HPAEC), the phospho-oligosaccharides eluted as a complex cluster of species (Figure 2C and Figure S2) significantly later than maltooctaose (G8), the longest oligosaccharide standard (Figure 2B), indicating the absence of linear neutral glucose oligomers smaller than G8. Although the

(AP, gray) and analyzed by HPAEC. The asterisks mark species generated by laforin or alkaline phosphatase treatment that do not align with any of the linear oligosaccharide standards (B) and that are likely branched oligosaccharides.

See also Figure S2.

Table 1. Chemical Shift Assignments of Phosphorylated Oligosaccharides

	Residue		1	2	3	4	5	6	Nuclear Overhauser Effect
I	t- α -Glc-2-P-(1 \rightarrow ?)	^1H	5.69	4.00	3.76	3.50	3.69	3.83/3.77	–
I	t- α -Glc-2-P-(1 \rightarrow ?)	^{13}C	100.0	77.3	74.8	72.0	75.0	63.3	–
II	t- α -Glc-(1 \rightarrow 4)	^1H	5.59	3.58	3.65	3.43	3.66	3.83/3.77	IV-4
II	t- α -Glc-(1 \rightarrow 4)	^{13}C	101.3	74.2	75.4	72.1	75.4	63.3	–
III	4- α -Glc-(1 \rightarrow 4)	^1H	5.40	3.60	3.97	3.64	3.84	3.83/3.77	III _{n-1} -4 ^a
III	4- α -Glc-(1 \rightarrow 4)	^{13}C	102.2	74.1	76.0	79.7	73.8	63.3	–
IV	4- α -Glc-3-P-(1 \rightarrow 4)	^1H	5.35	3.75	4.46	3.81	3.87	n.d.	III-4, VII-4, or VIII-4
IV	4- α -Glc-3-P-(1 \rightarrow 4)	^{13}C	102.4	74.6	79.9	76.4	73.8	n.d.	–
V	4,6- α -Glc _{red}	^1H	5.22	3.55	3.96	3.64	3.93	3.98/3.83	–
V	4,6- α -Glc _{red}	^{13}C	94.6	74.2	76.0	79.7	72.7	69.7	–
VI	t- α -Glc-(1 \rightarrow 6)	^1H	4.99	3.54	3.74	3.44	3.86	n.d.	–
VI	t- α -Glc-(1 \rightarrow 6)	^{13}C	101.5	74.7	74.2	72.1	73.8	n.d.	–
VII	4- α -Glc-(1 \rightarrow 6)	^1H	4.95	3.59	4.01	3.63	3.85	n.d.	–
VII	4- α -Glc-(1 \rightarrow 6)	^{13}C	100.7	74.1	73.0	80.6	74.0	n.d.	–
VIII	4,6- β -Glc _{red}	^1H	4.65	3.25	3.77	3.62	3.60	3.97/3.73	–
VIII	4,6- β -Glc _{red}	^{13}C	98.5	76.7	78.9	80.6	77.3	68.8	–

Data from Figure 3 and Figure S3 are collated in the table. n.d., not determined. See also Table S1.

^aThe next residue in the chain.

phospho-oligosaccharide mixture is heterogeneous in terms of polymerization state, it is homogeneous in the sense that it consists of glucose and glucose-phosphate residues. It was therefore amenable to analysis by NMR spectroscopy. Several spin systems were detected by ^1H - ^1H COSY, TOCSY, and ^1H - ^{13}C HSQC (see Figure S3 and Table 1). The spectra were dominated by a group of similar spin systems belonging to 4- α -Glc-(1 \rightarrow 4) residues. Other spin systems present included those of 4- α -Glc-(1 \rightarrow 6), terminal α -Glc-(1 \rightarrow 4), terminal α -Glc-(1 \rightarrow 6), and α and β reducing end residues that appeared to be mostly 4,6-linked (i.e., a branching residue glycosylated in both the 4 and the 6 positions), judging by their H-1 chemical shifts (van Leeuwen et al., 2008). In addition, two spin systems were identified, each with one proton resonance uncharacteristically far downfield for glucose, suggesting substitution by phosphate (Figure S3 and Table S1). On the basis of the connectivities established by the COSY, TOCSY, and ROESY experiments and the carbon chemical shifts determined by the HSQC experiment, one of these downfield signals appeared to be H-2 of a terminal glucose residue and the other H-3 of a 4-linked glucose. To confirm substitution by phosphate, we acquired a ^1H - ^{31}P gHMQC spectrum, which showed two peaks, indicating substitution at the 2-OH and the 3-OH positions of glucose by phosphate (Figure 3A). We also acquired a ^1H - ^{31}P HMQC-TOCSY spectrum to ascertain that these two protons belong to the spin systems previously assigned. This spectrum showed the expected correlations of each of the peaks detected in gHMQC with their neighboring protons (Figure 3B). From these experiments, therefore, the phosphate present in muscle glycogen appears to be in the form of C2 and C3 monoesters. We found no evidence for the presence of a phosphodiester or a C6 phosphate as had been previously postulated.

Substrate Specificity of Laforin

Laforin was able to dephosphorylate phospho-oligosaccharides generated from glycogen. HPAEC analysis of laforin reaction products indicated the generation of maltotriose, maltotetraose, and maltopentaose (Figures 2B and 2C), as well as three other prominent species (asterisks), which are likely branched oligosaccharides. The release of phosphate by laforin is consistent with the presence of phosphomonoesters since there is no evidence in the literature that laforin has phosphodiesterase activity and it is inactive toward *p*-nitrophenylphosphocholine or *p*-nitrophenyl phenylphosphonate, two common phosphodiesterase substrates (V.S.T. and P.J.R., unpublished data). Alkaline phosphatase treatment yielded similar results to laforin treatment with the important exception that significant amounts of maltose were also produced (Figure 2D). These results further argue that phosphate is in a monoester linkage and also demonstrate the presence of maltose-P, maltotriose-P, maltotetraose-P, and maltopentaose-P in the mixture. In separate experiments, we have been unable to demonstrate dephosphorylation of glucose-1-P, glucose-2-P, or glucose-6-P by laforin (data not shown). These results provide the first insight into laforin's selectivity for oligosaccharide substrates; laforin can hydrolyse C2 and C3 phosphomonoesters of glucose in oligosaccharides with a minimum requirement of a trisaccharide phosphate for activity.

DISCUSSION

The results of this study expand our understanding of the metabolism of the phosphate in glycogen (Figure 4). First, the phosphate is present as glucose C2 and C3 monoesters. Glucose C3 phosphate has been described in plant amylopectin (Blenow et al., 2002), a polymer chemically related to glycogen

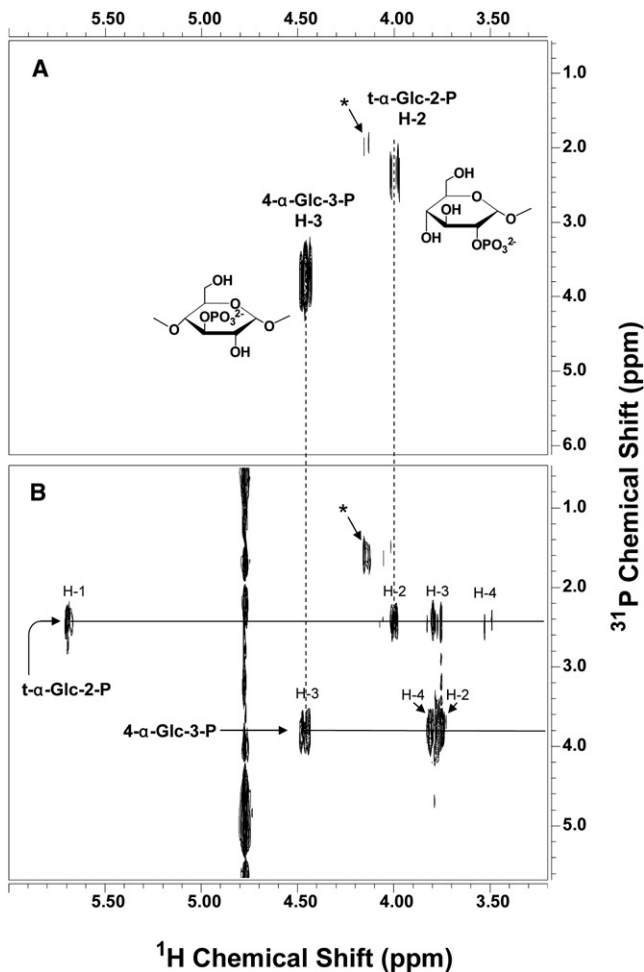


Figure 3. ^1H - ^{31}P Correlated NMR Spectra of Phosphorylated Oligosaccharides

The spectra were acquired at 25°C and 11.7 T with a 1 s relaxation delay and 3.5 kHz spectral width in F_2 .

(A) The ^1H - ^{31}P gHMQC spectrum was acquired with an 8.0 kHz spectral width in F_1 , 0.4 s acquisition time, 32 increments, and 360 transients per increment. (B) The ^1H - ^{31}P HMQC-TOCSY spectrum was acquired with a 3.0 kHz spectral width in F_1 , 0.3 s acquisition time, 40 ms spinlock time, 24 increments, and 400 transients per increment. Phosphorus decoupling was turned on during acquisition using the GARP-1 decoupling sequence. The signal marked with an asterisk is probably from a terminal glucose-2-phosphate residue linked in a different position but could not be clearly identified due to its low abundance. See also Figure S3.

(Ball et al., 1996), but as best we can tell there are no confirmed descriptions of a glucose C2 phosphomonoester in nature. Some studies of amylopectin (for example, Tabata and Hizukuri, 1971) had raised the possibility of C2 phosphate in starch but without providing any formal proof. Of course, other modifications of the C2 position of glucose are known, as in glucosamine or N-acetyl-glucosamine, and phosphorylation at C2 in fructose occurs in fructose-2,6-bisphosphate. Second, we propose a potential origin of the phosphate in glycogen as the β -phosphate of UDP-glucose, introduced by the action of glycogen synthase in a rare but potentially important deviation from its presumed “normal” reaction. Though we cannot exclude the

existence of other mechanisms for glycogen phosphorylation *in vivo*, the action of glycogen synthase has to be considered a strong candidate since very little phosphate is incorporated by muscle extracts lacking glycogen synthase. There are several examples of enzymes catalyzing reactions not considered to be their evolved function. For example, many phosphokinase enzymes catalyze hydrolysis of the cosubstrate ATP (Knowles, 1980). Another instance is the glucosyltransferase glycogenin, which is capable of hydrolyzing its substrate UDP-glucose to form UDP and glucose (Hurley et al., 2005). In these cases, the consequence is an effective waste of metabolic energy. For glycogen synthase, the alternative reaction would result in phosphorylated glycogen.

With knowledge of the chemical nature of the phosphate present in glycogen, we can begin to formulate mechanisms by which glycogen synthase may mediate its introduction into the polysaccharide. Glycogen synthase belongs to the family of retaining glycosyltransferases (Lairson et al., 2008) and normally attaches the C1 of the donor glucose from UDP-glucose to the C4 of a nonreducing end of glycogen, with retention of the C1 stereochemistry and release of UDP as the leaving group (Figure 5). Understanding the catalytic mechanism of this class of enzymes has been challenging, and debate continues as to whether a two-stage $\text{S}_{\text{N}}2$ reaction or a concerted $\text{S}_{\text{N}}\text{i}$ mechanism is operative (Lairson et al., 2008). In either case, the mechanism involves reaction of the C1 of the donor monosaccharide moiety. Though little discussed in recent years, the formation of cyclic glucose C1 phosphodiester is supported by a fairly extensive literature (Khorana et al., 1957; Kokesh et al., 1977, 1978; Nunez and Barker, 1976; Zmudzka and Shugar, 1964). For example, glucose-1,2-cyclic phosphate can form spontaneously from UDP-glucose under appropriate conditions (Paladini and Leloir, 1952). One potential explanation for the phosphorylation of glycogen by glycogen synthase would be if UDP-glucose infrequently breaks down in the enzyme active site to generate glucose-1,2-cyclic phosphate or glucose-1,3 cyclic phosphate, which then enters into the normal catalytic reaction, with attack at C1 now opening the ring to form a phosphoglucose moiety that is transferred to C4 of the acceptor (Figure 5).

It is possible that the presence of a controlled amount of phosphate in glycogen reflects some as-yet-unappreciated metabolic, structural, or functional purpose. Alternatively, phosphate incorporation into glycogen might result from a catalytic error by glycogen synthase. If so, it would resemble errors in the synthesis of other biopolymers like DNA (Kunkel and Bebenek, 2000), RNA (Thomas et al., 1998), and proteins (Zaheer and Green, 2009). These examples involve misincorporation of a monomeric unit during polymer synthesis directed by a template, DNA or mRNA, and specialized repair systems have evolved to improve the fidelity of polymer production. Estimates of the error rates for single base substitutions by proofreading-deficient DNA polymerases range from 10^{-3} to 10^{-6} , depending on the specific enzyme (Kunkel and Bebenek, 2000). Phosphate incorporation by glycogen synthase ($\sim 10^{-4}$) is in a similar range. Whereas an error in the synthesis of an individual protein or RNA molecule would have limited impact, errors in DNA sequence are perpetuated and hence must be strictly suppressed. Similarly, without a mechanism for its removal, phosphate incorporated into a glycogen molecule would persist

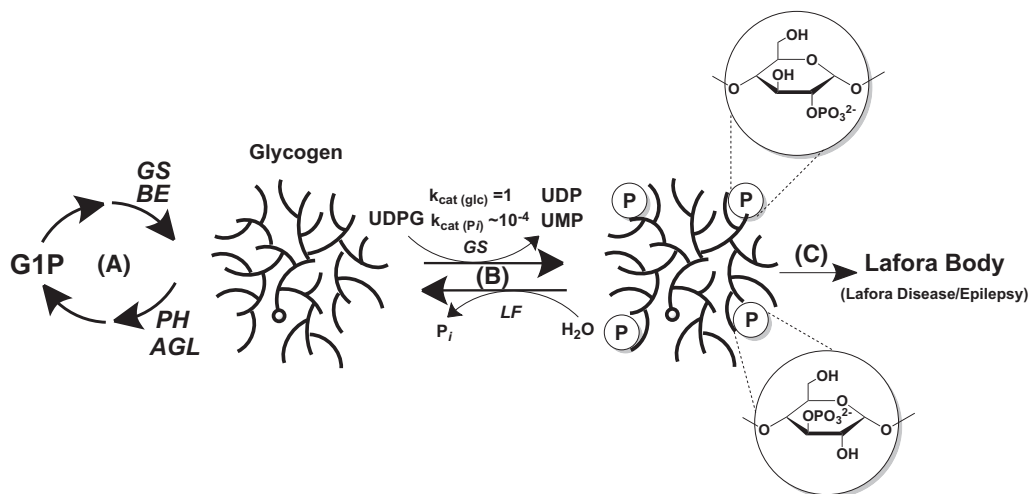


Figure 4. Model for Glycogen Phosphate Metabolism and Lafora Body Formation

(A) Glycogen is synthesized by glycogen synthase (GS) and branching enzyme (BE) and degraded by glycogen phosphorylase (PH) and debranching enzyme (AGL).

(B) Glycogen synthase infrequently (1 in ~10,000) incorporates phosphate residues into glycogen. The k_{cat} values given simply denote the relative rates of glucose versus glucose phosphate incorporation. Excessive incorporation of phosphate as C2 or C3 phosphomonesters, which disrupts glycogen structure, is normally kept in check by the action of the laforin phosphatase (LF).

(C) When laforin is defective, excessive phosphorylation results in the formation of Lafora bodies and Lafora disease.

because each molecule undergoes many rounds of partial degradation and resynthesis. This turnover of glycogen explains the difference between the rate of phosphate incorporation into glycogen by glycogen synthase (1 in ~10,000 glucoses) and the higher level of basal phosphorylation of glycogen in tissues (~1 in 1500 glucoses in mouse muscle). The latter is a function not only of the synthetic rates but also of the relative rates of glucose and phosphate removal from glycogen, mediated by glycogen phosphorylase/debranching enzyme and laforin, respectively.

Whether or not glycogen phosphate has a function or is simply the result of a catalytic error, we do know that excess phosphate is detrimental to glycogen structure. Therefore, we propose that laforin serves to prevent overaccumulation of covalent phosphate in glycogen and can be considered part of a repair or damage control mechanism, simpler but conceptually not unlike DNA repair. In

mice, phosphate introduced by glycogen synthase accumulates to a basal, tolerated level that remains constant from three to twelve months of age (Tagliabracci et al., 2008). When laforin is disabled in laforin knockout mice or Lafora patients, however, excessive phosphorylation of glycogen occurs and is associated with a progressive deterioration in glycogen structure (Tagliabracci et al., 2008), leading ultimately to Lafora disease and its tragic consequences (Andrade et al., 2007; Delgado-Escueta, 2007; Gentry et al., 2009). It is interesting that, for the most part, laforin is restricted to vertebrates (Gentry et al., 2007), organisms with life spans long enough for excessive phosphorylation of glycogen to have structural and metabolic consequences.

MGSKO mice are disrupted for the *GYS1* gene (Pederson et al., 2004), which encodes the glycogen synthase isoform expressed in skeletal muscle, heart, brain, and several other

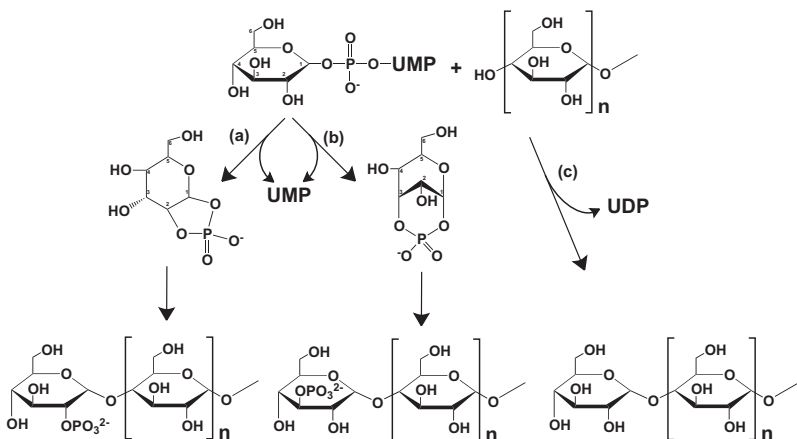


Figure 5. Proposed Mechanism for the Introduction of Phosphate into Glycogen by Glycogen Synthase

Glycogen synthase normally transfers a glucose residue from UDP-glucose to form a new α -1,4-glycosidic linkage with the C4-hydroxyl at the reducing end of a glycogen chain (pathway c). The proposed phosphorylation mechanism would involve the formation, in the active site of glycogen synthase, of either glucose-1,2-cyclic phosphate (pathway a) or glucose-1,3-cyclic phosphate (pathway b). Reaction of the C1 of the cyclic phosphodiester would result in the transfer of either a glucose-2-phosphate or a glucose-3-phosphate moiety in an α -1,4-glycosidic linkage to a reducing end of glycogen.

tissues. Some 90% of MGSKO mice die perinatally, most likely due to defects in embryonic cardiac development caused by the absence of heart glycogen (Pederson et al., 2004). However, surviving MGSKO mice, which totally lack brain glycogen, appear normal, have similar exercise capacity as wild-type animals, and if anything have improved ability to dispose of glucose (Pederson et al., 2005a, 2005b). Relevant to this discussion, the MGSKO mice display no obvious neurological symptoms up to 20 months of age (B.A. Pederson, personal communication). Therefore, selective inhibition of brain glycogen synthase might provide a viable therapeutic intervention in Lafora disease, for which there is currently no effective treatment.

EXPERIMENTAL PROCEDURES

Enzymes

Rabbit muscle glycogen synthase and yeast Gsy2p were purified as previously described (Baskaran et al., 2010; DePaoli-Roach et al., 2003). Purified recombinant human glycogen synthase muscle isoform (GYS1) produced by baculoviral expression in insect cells was the generous gift of May Khanna and Yuichiro Takagi.

Synthesis and Purification of [β - 32 P] UDP-Glucose

[β - 32 P]UDP-glucose was synthesized enzymatically and purified by a modification of the method of Dhugga and Ray (1994) as described in Heyen et al. (2009). In brief, 5 mCi of [γ - 32 P]ATP (3000 Ci/mmol) was converted enzymatically to [β - 32 P]UDP-glucose and bound to activated charcoal to remove glucose-1P and glucose-6P. Differential elution from the charcoal separated the [β - 32 P]UDP-glucose from unreacted [γ - 32 P]ATP. The eluate was dried in a Speed Vac, and the [β - 32 P]UDP-glucose was resuspended in 100–200 μ l of H₂O and stored in aliquots at -80°C until use.

Phosphorylation of Glycogen with Glycogen Synthase

A reaction mixture consisting of 50 mM Tris-HCl (pH 7.6), 6.7 mg/ml deionized rabbit liver glycogen, 7.2 mM glucose-6P, 5 mM EDTA, and 1 μ M [β - 32 P]UDP-glucose (~50,000–100,000 cpm/pmol) or 1 μ M UDP-[U- 14 C]glucose (500–2000 cpm/pmol) and 1–1.2 μ g/ml rabbit muscle glycogen synthase, 1.9 μ g/ml human glycogen synthase, or 0.6 μ g/ml Gys2p was incubated for the indicated time or, if not stated, 30 min, and terminated either by boiling in a 100 $^{\circ}\text{C}$ H₂O bath or by the addition of 2 volumes of ethanol. Immediately before termination of the reaction, KH₂PO₄ was added to both the ^{14}C and ^{32}P reactions to a final concentration of 50 mM to reduce background ^{32}P . All reactions, whether terminated by boiling or ethanol precipitation, were placed at -20°C for a minimum of 1 hr in 66% ethanol containing 5–15 mM LiCl to precipitate the radiolabeled glycogen. The glycogen was recovered by centrifugation at 17,500 \times g for 20 min at 4 $^{\circ}\text{C}$ and dissolved in H₂O to a final concentration of 6.67 mg/ml, and SDS loading buffer was added. After boiling, the glycogen (200–250 μ g) was subjected to SDS-PAGE and the radioactivity visualized by autoradiography using a phosphorimager. For quantitation of ^{32}P , the radioactive region was excised from the gel, minced, and added to scintillation fluid. Background from blank reactions lacking glycogen synthase were subtracted. For quantitation of ^{14}C , the purified glycogen was spotted onto filter paper, washed in 66% ethanol, dried, and added to scintillation fluid. Radioactivity was determined with a scintillation counter.

Initially, we attempted to adapt the standard glycogen synthase assay (Thomas et al., 1968) to measure ^{32}P incorporation. In this assay, the reaction is transferred to filter paper, immersed in 66% ethanol to terminate the reaction and to remove unreacted UDP-[U- ^{14}C]glucose, leaving ^{14}C -labeled glycogen trapped on the filter paper. However, we discovered that UDP binds significantly to the filter papers. With [β - 32 P]UDP-glucose as substrate, the normal glycogen synthase reaction generates [β - 32 P]UDP which binds to the filter and gives a false value for the incorporation of ^{32}P .

For some experiments, the glycogen pellet was redissolved in H₂O to a final concentration of ~8.3 mg/ml and diluted to 6.7 mg/ml by the addition of α -amylase and amyloglucosidase (final concentration of 300 μ g/ml for each

glucosidase and 20 mM sodium acetate [pH 4.8] or laforin (see below). The glucosidase reaction was for a minimum of 1 hr at 37 $^{\circ}\text{C}$ –40 $^{\circ}\text{C}$ and was terminated by the addition of SDS loading buffer.

Phosphorylation of Glycogen with Skeletal Muscle or Yeast Extracts

Rabbit liver glycogen was incubated with skeletal muscle extracts from wild-type or genetically modified mice. Frozen tissue samples (30 mg) were homogenized in 10 volumes (w/v) of a buffer containing 50 mM Tris-HCl (pH 7.8), 10 mM EDTA, 2 mM EGTA, 100 mM NaF, 2 mM benzamidine, 0.1 mM N²-p-tosyl-L-lysine chloromethyl ketone, 50 mM β -mercaptoethanol, 0.5 mM PMSF, 10 μ g/ml leupeptin with a Tissue Tearer at maximal speed for 20–30 s. Muscle homogenates were centrifuged at 3600 \times g and the supernatant (~100 μ g of total protein) used to start the reaction as described above. *S. cerevisiae* (EG3281A or DH3 *gcy1 gcy2* [Cheng et al., 1995]) were grown on YPD overnight, harvested by centrifugation, and homogenized by agitation with glass beads in a homogenization buffer as above without EGTA. Low-speed centrifugation yielded a cell extract used for the assay. After incubation at 30 $^{\circ}\text{C}$ for 30 min, the glycogen was purified, treated with or without glucosidases, and visualized as above.

Dephosphorylation of ^{32}P -Labeled Glycogen with Laforin

Phosphorylated glycogen (320–350 μ g) was incubated with 50 μ g/ml active wild-type laforin or catalytically inactive C266S laforin in phosphatase buffer (100 mM sodium acetate, 50 mM bis-Tris, 50 mM Tris-HCl, 2 mM DTT [pH 6.5]) in a final reaction volume of 50 μ l for a minimum of 1.5 hr at 37 $^{\circ}\text{C}$. The reaction was terminated by the addition of SDS loading buffer and subjected to SDS-PAGE and the radiolabeled polysaccharide detected by a phosphorimager.

Purification of Phosphorylated Oligosaccharides from Rabbit Skeletal Muscle Glycogen

Rabbit skeletal muscle glycogen was purified as in Tagliabracci et al. (2007). Approximately 250 mg rabbit skeletal muscle glycogen was digested overnight at 37 $^{\circ}\text{C}$ –40 $^{\circ}\text{C}$ with 300 μ g/ml amyloglucosidase and 300 μ g/ml α -amylase containing 1 mM CaCl₂, and 10 mM sodium acetate (pH 4.8) in a 3 ml reaction volume. After digestion, the insoluble glycogenin was removed by centrifugation at 5000 \times g for 5 min, and the digest was placed in a boiling H₂O bath for 10 min to denature the α -amylase and amyloglucosidase. After cooling, the protein was removed by centrifugation, and the cleared supernatant was added to 2 ml (bed volume) DEAE Sepharose resin equilibrated with 10 mM sodium acetate (pH 4.8) and incubated overnight on a Nutator at 4 $^{\circ}\text{C}$. The resin was poured into a column and washed with 20 column volumes of H₂O. The anionic species were eluted stepwise (flow rate of ~0.5 ml/min) with 10 mM, 50 mM, 100 mM, 500 mM, and 1 M ammonium bicarbonate (NH₄HCO₃). Four milliliters of each concentration was used, and 1 ml fractions were collected. An aliquot (40–60 μ l) of each fraction was used to measure covalent phosphate with the sensitive Malachite green method (Hess and Derr, 1975). The remainder was dried in a Speed Vac and redissolved in ~500 μ l H₂O, and dried further until there was no visible NH₄HCO₃. The fractions containing phosphate were dissolved in H₂O to a final concentration of 1 mM phosphate and stored at -20°C until use.

Dephosphorylation of Phosphorylated Oligosaccharides Purified from Rabbit Skeletal Muscle Glycogen

Phosphorylated oligosaccharides (10 μ l, 1 mM with respect to phosphate) were treated with either wild-type laforin (25 μ g/ml) or C266S laforin (25 μ g/ml) in 25 mM sodium acetate (pH 5.5) in a final reaction volume of 20 μ l overnight at 37 $^{\circ}\text{C}$ to ensure completion. The reactions were terminated by boiling in a 100 $^{\circ}\text{C}$ H₂O bath for 10 min, and the precipitated protein was removed by centrifugation, filtered, and analyzed as described below.

Analysis of Purified Phosphorylated Oligosaccharides by High-Performance Anion Exchange Chromatography

Phosphorylated oligosaccharides purified from glycogen were analyzed by high-performance anion exchange chromatography (HPAEC) with a Dionex ICS3000 with a PA1 column with pulsed amperometric detection. All samples were filtered with a spin column before injection into a 25 μ l injection loop.

Eluent A consisted of 100 mM NaOH, and Eluent B 100 mM NaOH containing 1 M sodium acetate. The fractions were eluted with a continuous gradient from 0%–75% of Eluent B over 60 min with a flow rate of 0.25 ml/min. Five to ten nanomoles of phosphorylated oligosaccharides (based on phosphate concentration) were analyzed. Carbohydrate standards (250 pmoles–2.5 nmoles) were also analyzed.

Matrix-Assisted Laser Desorption Ionization Time of Flight Mass Spectrometry Analysis of Phosphorylated Oligosaccharides

An aliquot (2 μ l, 1 mM phosphate) of purified phosphorylated oligosaccharides were analyzed by Matrix-assisted laser desorption ionization time of flight mass spectrometry (MALDI/TOF-MS). The matrix was 2',4',6'-trihydroxyacetophenone monohydrate (THAP); 0.5 M THAP in ethanol:0.1 M diammonium hydrogen citrate in H₂O: 2:1 (v/v). The matrix solution (1 μ l) was deposited first on the target followed by an equal volume of the sample. All spectra were obtained with a Microflex LRF (Bruker). MALDI/TOF-MS analysis was performed in the reflector negative ion mode.

Nuclear Magnetic Resonance Spectroscopy

The phosphorylated oligosaccharides were deuterium exchanged by lyophilization from D₂O, dissolved in D₂O, and transferred to a nuclear magnetic resonance (NMR) tube with magnetic susceptibility plugs matched to D₂O (Shigemitsu). The pD of the sample was 5.9. Proton-proton and proton-carbon correlated spectra were acquired on a Varian Inova 600 MHz spectrometer equipped with a 3 mm cryoprobe or a Varian Inova 800 MHz spectrometer, equipped with a 5 mm cryoprobe. Proton-phosphorous correlated spectra were acquired on a Varian Inova 500 MHz spectrometer equipped with an 8 mm XH room-temperature probe. All spectra were taken at 25°C. Chemical shifts were referenced to internal acetone [$\delta(^1\text{H}) = 2.218$ ppm, $\delta(^{13}\text{C}) = 33.0$ ppm] (Wishart et al., 1995). All experiments except the ^1H - ^{31}P correlated spectra were acquired with standard Varian pulse sequences. For ^1H - ^{31}P correlated experiments, the regular gHMQC and HMQC-TOCSY experiments were modified for ^{31}P in the X channel, with a π pulse of 13 μ s at a level of 60 dB, and a $^3\text{J}_{\text{H-P}}$ coupling constant of 7 Hz. Chemical shifts were referenced to external 85% phosphoric acid [$\delta(^{31}\text{P}) = 0.00$ ppm]. Additional acquisition parameters are listed in Table S1.

SUPPLEMENTAL INFORMATION

Supplemental Information includes three figures and one table and can be found with this article online at doi:10.1016/j.cmet.2011.01.017.

ACKNOWLEDGMENTS

Supported in part by National Institutes of Health (NIH) grants DK27221 and NS56454 (to P.J.R.), NIH/National Center for Research Resources grant P41 RR018502 to the Complex Carbohydrate Research Center, University of Georgia, and the American Heart Association (to V.S.T.). We thank Zhong-Yin Zhang, James Maller, and Nina Raben for comments regarding the manuscript.

Received: August 24, 2010
Revised: November 8, 2010
Accepted: January 21, 2011
Published: March 1, 2011

REFERENCES

- Andrade, D.M., Turnbull, J., and Minassian, B.A. (2007). Lafora disease, seizures and sugars. *Acta Myol.* 26, 83–86.
- Ball, S., Guan, H.P., James, M., Myers, A., Keeling, P., Mouille, G., Buléon, A., Colonna, P., and Preiss, J. (1996). From glycogen to amylopectin: a model for the biogenesis of the plant starch granule. *Cell* 86, 349–352.
- Baskaran, S., Roach, P.J., DePaoli-Roach, A.A., and Hurley, T.D. (2010). Structural basis for glucose-6-phosphate activation of glycogen synthase. *Proc. Natl. Acad. Sci. USA* 107, 17563–17568.
- Blennow, A., Nielsen, T.H., Baunsgaard, L., Mikkelsen, R., and Engelsen, S.B. (2002). Starch phosphorylation: a new front line in starch research. *Trends Plant Sci.* 7, 445–450.
- Cheng, C., Mu, J., Farkas, I., Huang, D., Goebel, M.G., and Roach, P.J. (1995). Requirement of the self-glucosylating initiator proteins Glg1p and Glg2p for glycogen accumulation in *Saccharomyces cerevisiae*. *Mol. Cell. Biol.* 15, 6632–6640.
- Delgado-Escueta, A.V. (2007). Advances in lafora progressive myoclonus epilepsy. *Curr. Neurol. Neurosci. Rep.* 7, 428–433.
- DePaoli-Roach, A.A., Vilardo, P.G., Kim, J.H., Mavila, N., Vemuri, B., and Roach, P.J. (2003). Determination of mammalian glycogen synthase phosphatase activity. *Methods Enzymol.* 366, 17–34.
- Dhugga, K.S., and Ray, P.M. (1994). Purification of 1,3-beta-D-glucan synthase activity from pea tissue. Two polypeptides of 55 kDa and 70 kDa copurify with enzyme activity. *Eur. J. Biochem.* 220, 943–953.
- Fontana, J.D. (1980). The presence of phosphate in glycogen. *FEBS Lett.* 109, 85–92.
- Gentry, M.S., Downen, R.H., 3rd, Worby, C.A., Mattoo, S., Ecker, J.R., and Dixon, J.E. (2007). The phosphatase laforin crosses evolutionary boundaries and links carbohydrate metabolism to neuronal disease. *J. Cell Biol.* 178, 477–488.
- Gentry, M.S., Dixon, J.E., and Worby, C.A. (2009). Lafora disease: insights into neurodegeneration from plant metabolism. *Trends Biochem. Sci.* 34, 628–639.
- Hess, H.H., and Derr, J.E. (1975). Assay of inorganic and organic phosphorus in the 0.1–5 nanomole range. *Anal. Biochem.* 63, 607–613.
- Heyen, C.A., Tagliabracci, V.S., Zhai, L., and Roach, P.J. (2009). Characterization of mouse UDP-glucose pyrophosphatase, a Nudix hydrolase encoded by the Nudt14 gene. *Biochem. Biophys. Res. Commun.* 390, 1414–1418.
- Hurley, T.D., Stout, S., Miner, E., Zhou, J., and Roach, P.J. (2005). Requirements for catalysis in mammalian glycogenin. *J. Biol. Chem.* 280, 23892–23899.
- Khorana, H.G., Tener, R.S., Wright, R.S., and Moffatt, J.G. (1957). Cyclic Phosphates. III. Some General Observations on the Formation and Properties of Five-, Six- and Seven-membered Cyclic Phosphate Esters. *J. Am. Chem. Soc.* 79, 430–436.
- Knowles, J.R. (1980). Enzyme-catalyzed phosphoryl transfer reactions. *Annu. Rev. Biochem.* 49, 877–919.
- Kokesh, F.C., Stephenson, R.K., and Kakuda, Y. (1977). Inhibition of potato starch phosphorylase by alpha-D-glucopyranose-1,2-cyclic phosphate. *Biochim. Biophys. Acta* 483, 258–262.
- Kokesh, F.C., Cameron, D.A., Kauda, Y., and Kuras, P.V. (1978). Hydrolysis of α -glucopyranose 1,2-cyclic phosphate: the effect of pH and temperature on the product distribution, and the position of opening of the phosphate diester ring in formation of D-glucose 2-phosphate. *Carbohydr. Res.* 62, 289–300.
- Kunkel, T.A., and Bebenek, K. (2000). DNA replication fidelity. *Annu. Rev. Biochem.* 69, 497–529.
- Lairson, L.L., Henrissat, B., Davies, G.J., and Withers, S.G. (2008). Glycosyltransferases: structures, functions, and mechanisms. *Annu. Rev. Biochem.* 77, 521–555.
- Lomako, J., Lomako, W.M., Whelan, W.J., and Marchase, R.B. (1993). Glycogen contains phosphodiester groups that can be introduced by UDPglucose: glycogen glucose 1-phosphotransferase. *FEBS Lett.* 329, 263–267.
- Lomako, J., Lomako, W.M., Kirkman, B.R., and Whelan, W.J. (1994). The role of phosphate in muscle glycogen. *Biofactors* 4, 167–171.
- Minassian, B.A., Lee, J.R., Herbrick, J.A., Huizenga, J., Soder, S., Mungall, A.J., Dunham, I., Gardner, R., Fong, C.Y., Carpenter, S., et al. (1998). Mutations in a gene encoding a novel protein tyrosine phosphatase cause progressive myoclonus epilepsy. *Nat. Genet.* 20, 171–174.
- Nunez, H.A., and Barker, R. (1976). The metal ion catalyzed decomposition of nucleoside diphosphate sugars. *Biochemistry* 15, 3843–3847.

- Paladini, A.C., and Leloir, L.F. (1952). Studies on uridine-diphosphate-glucose. *Biochem. J.* *51*, 426–430.
- Pederson, B.A., Chen, H., Schroeder, J.M., Shou, W., DePaoli-Roach, A.A., and Roach, P.J. (2004). Abnormal cardiac development in the absence of heart glycogen. *Mol. Cell. Biol.* *24*, 7179–7187.
- Pederson, B.A., Cope, C.R., Schroeder, J.M., Smith, M.W., Irimia, J.M., Thurberg, B.L., DePaoli-Roach, A.A., and Roach, P.J. (2005a). Exercise capacity of mice genetically lacking muscle glycogen synthase: in mice, muscle glycogen is not essential for exercise. *J. Biol. Chem.* *280*, 17260–17265.
- Pederson, B.A., Schroeder, J.M., Parker, G.E., Smith, M.W., DePaoli-Roach, A.A., and Roach, P.J. (2005b). Glucose metabolism in mice lacking muscle glycogen synthase. *Diabetes* *54*, 3466–3473.
- Roach, P.J. (2002). Glycogen and its metabolism. *Curr. Mol. Med.* *2*, 101–120.
- Sakai, M., Austin, J., Witmer, F., and Trueb, L. (1970). Studies in myoclonus epilepsy (Lafora body form). II. Polyglucosans in the systemic deposits of myoclonus epilepsy and in corpora amylacea. *Neurology* *20*, 160–176.
- Schnabel, R., and Seitelberger, F. (1968). Histophysical and histochemical investigations of myoclonus bodies. *Pathol. Eur.* *3*, 218–226.
- Serratos, J.M., Gómez-Garre, P., Gallardo, M.E., Anta, B., de Bernabé, D.B., Lindhout, D., Augustijn, P.B., Tassinari, C.A., Malafosse, R.M., Topcu, M., et al. (1999). A novel protein tyrosine phosphatase gene is mutated in progressive myoclonus epilepsy of the Lafora type (EPM2). *Hum. Mol. Genet.* *8*, 345–352.
- Tabata, S., and Hizukuri, S. (1971). Studies on starch phosphate. Part 2. Isolation of glucose 3-phosphate and maltose phosphate by acid hydrolysis of potato starch. *Starch-Stärke* *23*, 267–272.
- Tagliabracci, V.S., Turnbull, J., Wang, W., Girard, J.M., Zhao, X., Skurat, A.V., Delgado-Escueta, A.V., Minassian, B.A., Depaoli-Roach, A.A., and Roach, P.J. (2007). Laforin is a glycogen phosphatase, deficiency of which leads to elevated phosphorylation of glycogen in vivo. *Proc. Natl. Acad. Sci. USA* *104*, 19262–19266.
- Tagliabracci, V.S., Girard, J.M., Segvich, D., Meyer, C., Turnbull, J., Zhao, X., Minassian, B.A., Depaoli-Roach, A.A., and Roach, P.J. (2008). Abnormal metabolism of glycogen phosphate as a cause for Lafora disease. *J. Biol. Chem.* *283*, 33816–33825.
- Thomas, J.A., Schlender, K.K., and Lerner, J. (1968). A rapid filter paper assay for UDPglucose-glycogen glucosyltransferase, including an improved biosynthesis of UDP-14C-glucose. *Anal. Biochem.* *25*, 486–499.
- Thomas, M.J., Platas, A.A., and Hawley, D.K. (1998). Transcriptional fidelity and proofreading by RNA polymerase II. *Cell* *93*, 627–637.
- van Leeuwen, S.S., Kralj, S., van Geel-Schutten, I.H., Gerwig, G.J., Dijkhuizen, L., and Kamerling, J.P. (2008). Structural analysis of the alpha-D-glucan (EPS35-5) produced by the *Lactobacillus reuteri* strain 35-5 glucansucrase GTFA enzyme. *Carbohydr. Res.* *343*, 1251–1265.
- Wishart, D.S., Bigam, C.G., Yao, J., Abildgaard, F., Dyson, H.J., Oldfield, E., Markley, J.L., and Sykes, B.D. (1995). ¹H, ¹³C and ¹⁵N chemical shift referencing in biomolecular NMR. *J. Biomol. NMR* *6*, 135–140.
- Zaher, H.S., and Green, R. (2009). Fidelity at the molecular level: lessons from protein synthesis. *Cell* *136*, 746–762.
- Zmudzka, B.S., and Shugar, D. (1964). Preparation and chemical and enzymic properties of cyclic phosphates of D-glucopyranose and synthesis of derivatives of N-(D-glucopyranosyl) pyridine. *Acta Biochim. Pol.* *11*, 509–525.